

Leaders & Tippetts

Trout Unlimited
Louisville Chapter - 476

APRIL 2010

Inside This Issue

Fly of the month.....2

Items of Interest.....3

Editors Notes.....4

A Horse is a Horse of Course

A special presentation was given at our last regular meeting. We were honored to have two highly regarded horsemen talk to us on the upcoming Kentucky Derby. John Asher and “Buck” Wheat enlighten us with some of their past escapades in the horse training business, as well as some of their highlights and lowlights in their career as thoroughbred men.

Also some of this years contenders were discussed as to their chances at winning the Kentucky Derby. We found that a lot goes into just qualifying for the Derby and that breeding in not always a guaranteed winner.

We would like to thank John and Buck for taking time out of their busy schedules to show us what goes on in the background of thoroughbred racing.

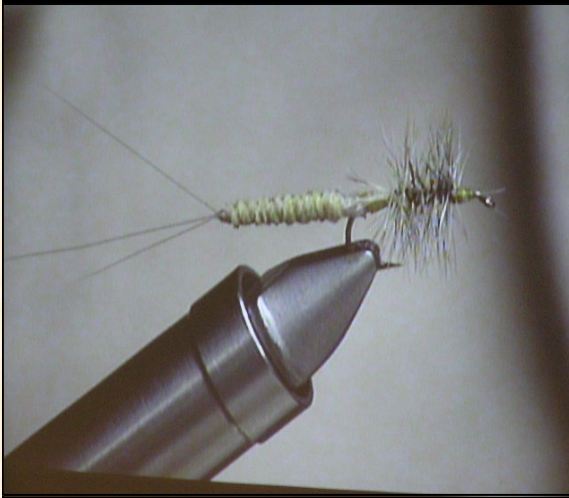


- Upcoming Dates**
- April 24—Wolf Creek Earth Day Celebration**
- April 27—Regular Chapter meeting**
- May 3—Regular Board Meeting**
- May 6—Wolf Creek “Hill Week”**
- May 11—Fly Tying With Steve Darnell**



May Fly

By: George Smith



MATERIALS

Saran Wrap
Large Sewing Needle
Size 12 Hook
Yellow Thread
Yellow Antron
Micro Fibers
Brown and Grizzly hackles

Step 1 Place large needle in vise, and wrap with saran wrap. Secure with thread, tying in three micro fibers for tail, making tight turns. Dub thread with fibers of antron, and wrap needle. Whip finish thread on needle, and coat with head cement. Let dry (possibly over night).

Step 2 Remove needle, and clip front end of body, in an angle to lay upon hook shank, leaving room for hackles. Secure with thread, then tie in hackles.

Step 3 Wrap brown hackle three to four turns towards eye, leaving a space for the grizzly hackle to be wrapped between each turn of brown hackle. Tie off both hackles, whip finish and cement.



We would like to thank George for bringing us this months fly. Not only is he a crafty fisherman, but a darn good fly tier as well. George has done a great deal for our chapter and we are grateful.

ITEMS OF INTEREST

Calling all volunteers!

We are in need of many volunteers for the next two months or so for a lot of upcoming events:

- Wolf Creek's **Earth Day Celebration** April 24th 9:00 to 3:00 pm. We are requested to set up a fly tying booth which will require a few tiers for this event.
- **Brandenburg** is scheduling a fly casting and tying event for the community. We'll need tiers and casting instructors for this event. There'll be a grill out provided by our host, so anyone interested in this date contact a board member. (This event has yet to be finalize).
- Wolf Creek "**Hill Week at Home**" Visit, Thursday May 6, 9:00 to 1:30 pm. Members of Congress and Senate field reps come to the hatchery, given a tour, lunch and then we would need someone to talk for about 10 –15 minutes on the importance of trout production. Attendees will then be given fly fishing lessons.
- **Reel Recovery** may still have some openings. Please go to the **Event page** on our Website at LouisvilleTU.org for more information. This is a wonderful opportunity for men who are fighting cancer.
- Wolf Creek—"Terrific Trout Trek", Saturday May 15th 9:30 am to 4:00 pm. This is the same scenario as the "Hill Week at Home" function, and we'll need volunteers for this event also.
- On Saturday May 22nd, 10:00 am—3:00 pm we need to provide volunteers at the **Salato Center for their Fly Tying Class**. We have provided volunteers in the past for this event.
- On July 24th Wolf Creek is putting on an **Introduction to Fly Fishing and Fly Tying Expo**. Normally they separated these events into two different dates, but felt that if they extend the time limit a couple of hours, and provide lunch, they would attract more visitors. Although this is some time off, we need to be thinking about attending this event

EDITORS NOTES

We all would like to take a moment and express our sympathy to George Smith, on the passing of his son.

* * * *

If anyone has items they would like to donate to the library, we would really like them. Contact Roy Weeks.

* * * *

Speaking of donating, thank you to all who have brought items for our monthly raffle. Keep it up!

* * * *

We still need another board member. Anyone interested, please contact a current member and let them know.



Dan Jackman